

TOP Panoramaway - Sölden

↔ 6km

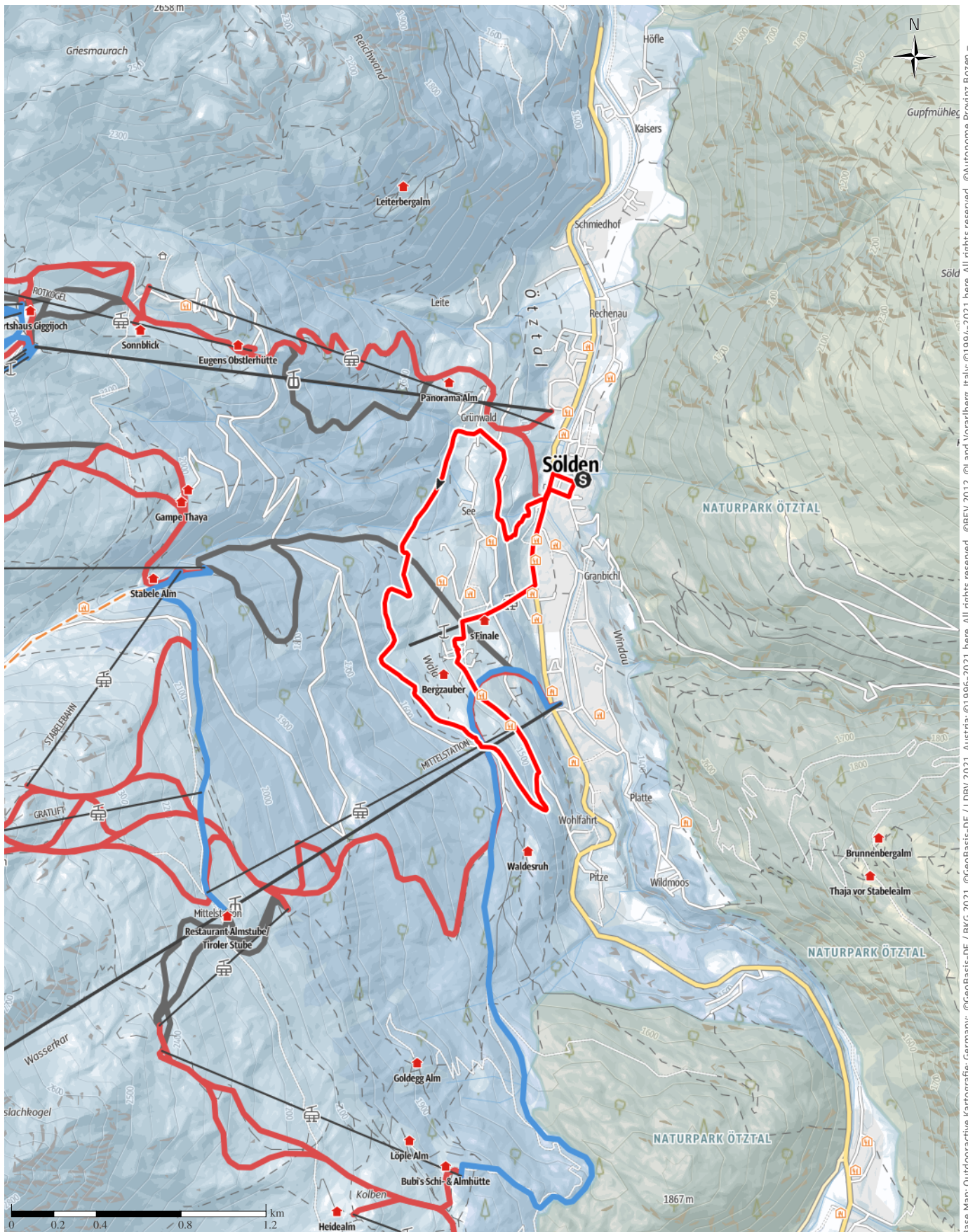
🕒 2:00h

▲ 332m

▼ 332m

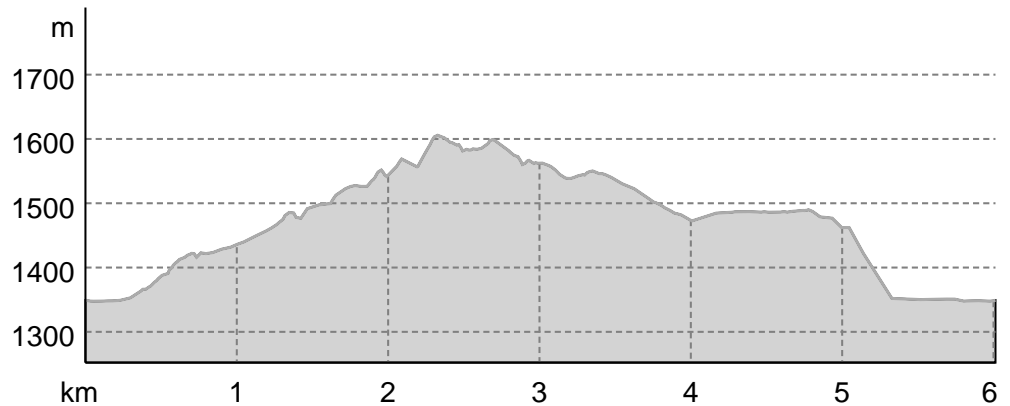
Difficulty

easy



TOP Panoramaway - Sölden

Elevation profile



route data

Winter Hiking

Distance	↔	6 km
Duration	🕒	2:00 h
Ascent	▲	332 m
Descent	▼	332 m

Difficulty easy

Stamina

Technique

Altitude

1,606 m

1,348 m

Best time of year

JAN	FEB	MAR
APR	MAY	JUN
JUL	AUG	SEP
OCT	NOV	DEC

Ratings

Authors

Experience

Landscape

More route data

Properties

- Public transport friendly
- Scenic
- Groomed snow

Awards

- Loop
- Refreshment stops available
- Family friendly



Source
Ötztal Tourismus
 Gemeindefstraße 4
 6450 Sölden
 Phone +43 (0)57200-200
 Fax +43 (0)57200-201
 info@oetztal.com
<https://www.oetztal.com>

FREIZEITARENA SÖLDEN --> Zentrumshuttle -->
 Außerwald --> Innerwald --> Stiegele --> Bichl -->

Berghof --> Kirche --> FREIZEITARENA SÖLDEN

The Panorama trail can be reached from the Freizeit Arena (turning left) on the main road towards the Zentrum Shuttle.
 When you arrive in Innerwald cross the ski slope towards the Panoramaweg.

Take a few moments to enjoy the panorama of Sölden.

The marked path begins at the "Stiegele" underpass.

Keep right and follow the path to See and then pass the church on your way back to Sölden.

Take a break while stopping by the many benches along the way. The Panorama trail lives up to its name.

Author's recommendation

The centrum shuttle is open from 08.00 until 24.00 in the wintersaison.

Safety information

Please inform yourself about the conditions and status of the respective winter hiking trail at Ötztal Tourismus.

TOP Panoramaway – Sölden

Ötztal Tourismus
T +43 (0) 57 200 200
soelden@oetztal.com

Equipment

Suitable equipment such as breathable and weather-adapted outdoor clothing, ankle-high hiking boots, wind, rain and sun protection, cap, and gloves, are required for all walks and hikes. The transport of a first aid package, a mobile phone and possibly a Hiking map is recommended.

Additional information**Map**

Citymap Sölden

Tips, hints and links

More details about winter hiking in Ötztal:
<https://www.oetztal.com/winterwandern>

Turn-by-turn directions**Starting point / trailhead**

Sölden Freizeitarena

Coordinates:

DD: 46.969572, 11.010587

DMS: 46°58'10.5"N 11°00'38.1"E

UTM: 32T 652940 5203744

w3w: ///bobble.mellowed.movers

Point of arrival

Sölden Freizeitarena

Turn-by-turn directions

Start the hike directly at the Freizeit Arena in Sölden. From there you walk along the main road to the Zentrum Shuttle to save the first metres in altitude.

Then cross the ski slope and follow the Außerwaldstraße through Innerwald to Stiegele.

From there you keep walking on the forest path to See.

Then you continue on the asphalt road through Bichl, Berghof passing the church back down to Sölden.

At the beginning the path always goes slightly upwards and then from See downwards back to Sölden.

Getting There

This route is conveniently accessible by public transport.

Public transport

Enjoy a comfortable and relaxing train ride to the train station Ötztal Bahnhof. You get off the train in ÖTZTAL Bahnhof where you change to a public bus or local taxi.

The current bus schedule can be found at:
<http://fahrplan.vvt.at>

Getting there

The drive to the ÖTZTAL. Located in Tyrol, the ÖTZTAL branches off to the south as the longest side valley of the Eastern Alps. Arriving by car leads guests over the Inn Valley to the valley entrance and further along the Ötztal. In addition to the toll motorway can also be used on rural roads. With the route planner, the journey can be quickly and easily determined:

To the route planner: <https://www.google.at/maps>

Parking

The following parking facilities are available in Sölden:

- parking at the Postplatz
- parking at the Giggijochbahn
- parking at the Gaislachkogelbahn

All parking is free during the day.